

THE QUINN SERIES

Two-Storey Townhomes

Plan	SQFT	Price*	Proposed HST Rebate**	New Price After Rebate***
Wyatt C	1,375	-	-	SOLD OUT
Ardyn C	1,400	\$710,489	\$60,499	\$649,990
Ardyn D	1,400	\$710,489	\$60,499	\$649,990
Brynn C	1,420	\$761,339	\$66,349	\$694,990

Private Community Fee: \$76.45/Month¹

SALES PROFESSIONAL

Jeryka McNally
 jmcnally@fusionhomes.com
 226-343-2766

\$0 Development Charges
 \$0 Levies
 \$0 Tarion Registration Fees

¹Estimated fee at project completion. *Price includes existing New Home HST Rebate of \$24,000. See Sales Professional for details. Some lots may carry premiums. All Prices include G.S.T./H.S.T. with the contemplation that the Purchaser will assign the existing New Home HST Rebate on closing. The federal and the provincial governments have proposed additional HST rebates, subject to eligibility. Restrictions apply. Prices, promotions and features are subject to change without notice. **Proposed HST Rebate amounts are subject to the approval and implementation of applicable government legislation and purchaser eligibility, as per federal and provincial governments. ***New Price After Rebate is the effective amount (subject to adjustments) that the Purchaser would pay on closing, subject to all of the proposed rebates coming into force, the Purchaser qualifying for the proposed rebates, and assigning the proposed rebates to the Vendor. See agreement of purchase and sale for further details. E. & O.E. (April 2026).

DEPOSIT STRUCTURE

	Urban Townhomes	2-Storey Townhomes	Detached Homes
Reservation	\$5,000	\$5,000	\$5,000
Firming	Balance to 2.5%	Balance to 2.5%	Balance to 2.5%
30 Days	2.5%	2.5%	2.5%
60 Days	1%	2.5%	2.5%
90 Days	1%	2.5%	2.5%
120 Days	1%	-	-
150 Days	1%	-	-
180 Days	1%	-	-
Total Deposit	10%	10%	10%

SALES PROFESSIONAL

Jeryka McNally
 jmcnally@fusionhomes.com
 226-343-2766

SALES OFFICE

155 Guelph Avenue, Cambridge ON
 cadence@fusionhomes.com

Hours:
 Mon – Wed 2PM – 7PM
 Sat & Sun 12PM – 5PM

See Sales Professional for details. Some lots may carry premiums. All prices include G.S.T./H.S.T. where applicable.
 Prices, promotions, deposits and features subject to change without notice E & O.E. (January 2026)

THE QUINN SERIES TWO-STOREY TOWNHOMES

Quality Construction

- Oversized 40" x 24" operating basement windows (as per plan)
- Rough-in for future 3-piece bathroom in basement
- California ceilings throughout
- Closets featuring full swing doors in lieu of bi-fold (as per plan)
- 7lb carpet underlay
- Installed piping for dryer vents (purchaser to connect to dryer)

Luxury Bathrooms

- Primary bedroom ensuite (as per plan)
- Luxurious soaker tubs in all baths
- Ceramic on ceilings in all showers
- Upgraded bathroom exhaust fans
- Ceramic floor tiles (as per plan)
- Ceramic wall tiles for tub surrounds (as per plan)
- Vanities included in all powder rooms (as per plan)

Sophisticated Finishes

- Premium carpet offering
- 4" baseboards with 2 3/4" casing
- One light fixture in each room, including walk-in closets
- Decora light switches and plugs throughout entire home
- Space saving configuration for shelving in walk-in closets
- Choice of standard interior paint (entire home)

Distinctive Exteriors

- Window grilles on front (as per elevation)
- Brick over first floor windows and doors on front elevation (as per plan)
- Walkway to front entry from paved driveway (12" x 12" paving stones)
- Rectangular address stone
- Upgraded window colour (as per exterior color package)

Gourmet Kitchens

- Custom cabinetry with soft close cabinet doors
- Ceramic floor tiles (as per plan)
- Quartz countertops
- Single lever pull down faucet

Green Living

- Water saver taps
- Low E windows with Argon
- Eco American Standard dual flush toilets
- Programmable digital thermostat
- R-27 insulated above-grade 2"x6" walls
- R-20 full height blanket insulation in basement
- R-31 insulated floor over unheated space
- R-60 insulation in attic
- Water softener & high-efficiency hot water tank (rental)
- High-efficiency furnace
- Energy saving bulbs in interior and exterior fixtures (Note: some light fixtures may not be able to accommodate these bulbs)
- Energy Recovery Ventilator (ERV) system

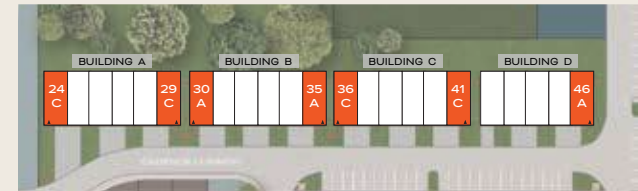
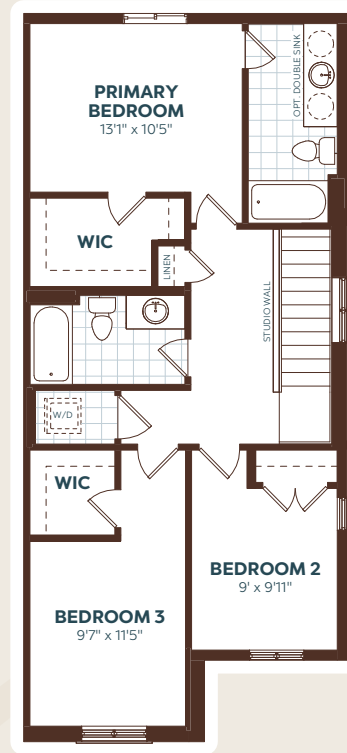
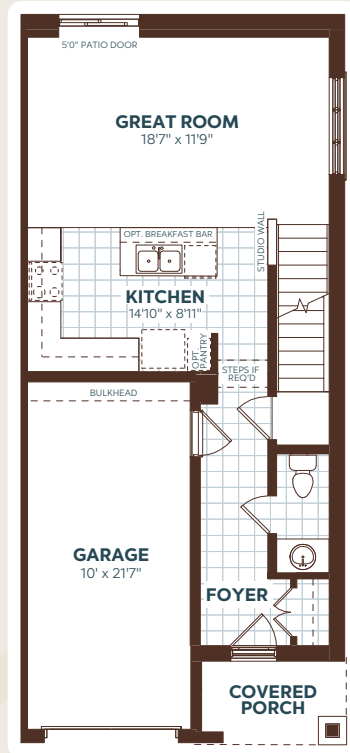
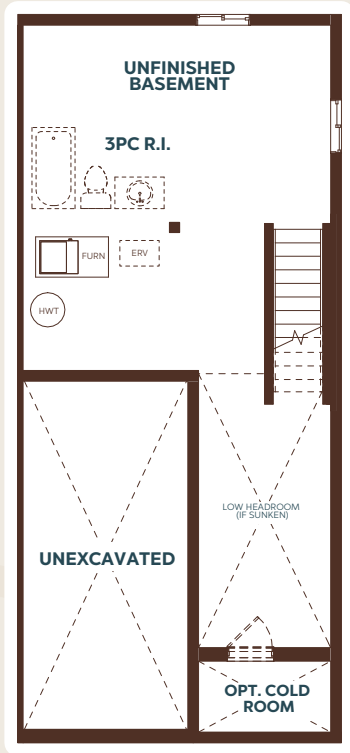
Some lots may carry premiums. All prices include G.S.T./H.S.T. where applicable. Prices and features subject to change without notice E & O.E. (October 24, 2025)

ELEVATION A
GROUND FLOOR

MAIN FLOOR

UPPER FLOOR

SITE PLAN



BUILDINGS A, B, C



BUILDING D



UPPER FLOOR VARIATION

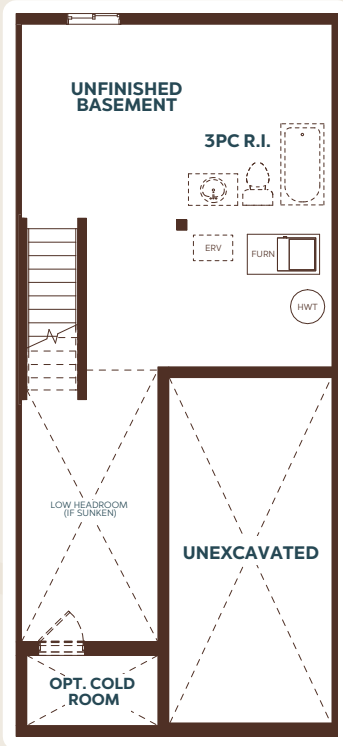


ELEVATION C
BEDROOM 3 VARIATION

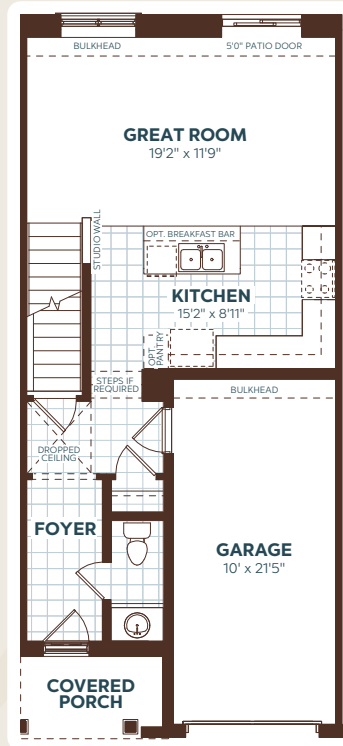
E.&O.E. All materials, specifications and floorplans are subject to change without notice. All house renderings are artist's concept. All floorplans are approximate dimensions. Actual usable floor space may vary from stated floor area. © Fusion Homes 2025. Reproduction of this plan is strictly prohibited.

1400 sq.ft. | 3 Bedroom | 2.5 Bathroom

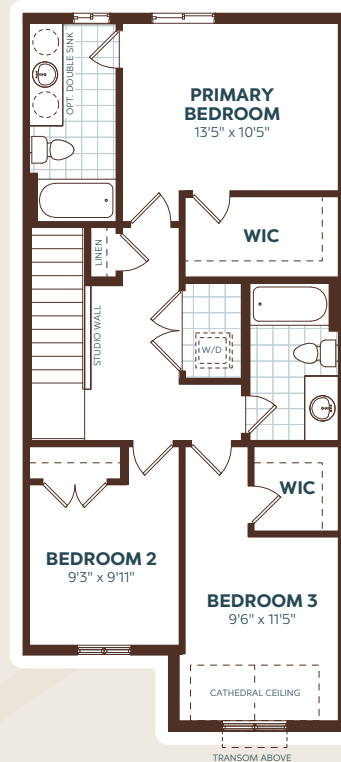
ELEVATION A GROUND FLOOR



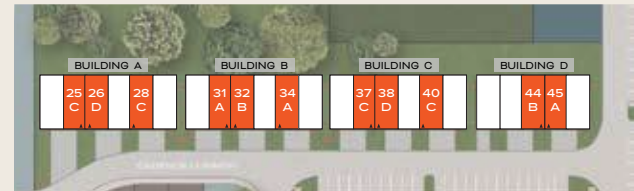
MAIN FLOOR



UPPER FLOOR



SITE PLAN



BUILDINGS A, B, C



BUILDING D



UPPER FLOOR VARIATIONS

ELEVATION B
BEDROOM 3 VARIATION



ELEVATION C
BEDROOM 3 VARIATION



ELEVATION D
BEDROOM 3 VARIATION



E.&O.E. All materials, specifications and floorplans are subject to change without notice. All house renderings are artist's concept. All floorplans are approximate dimensions. Actual usable floor space may vary from stated floor area. © Fusion Homes 2025. Reproduction of this plan is strictly prohibited.

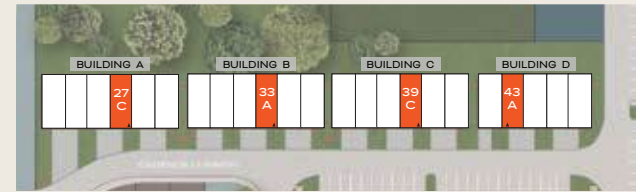
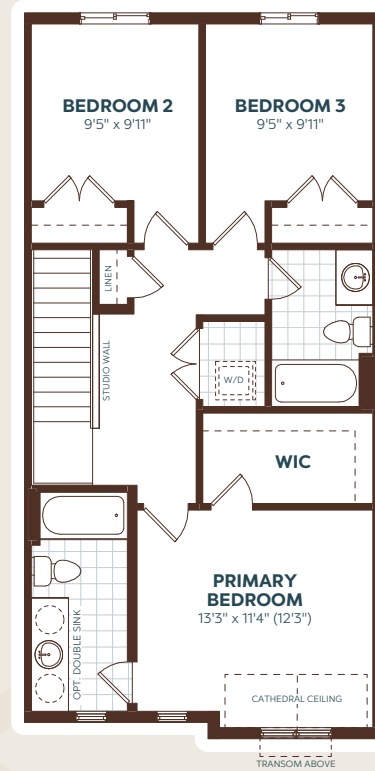
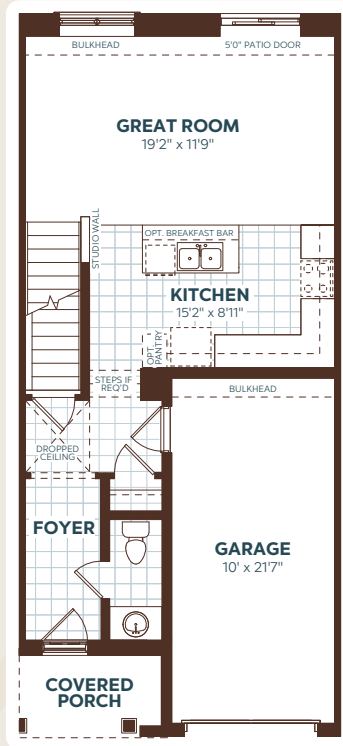
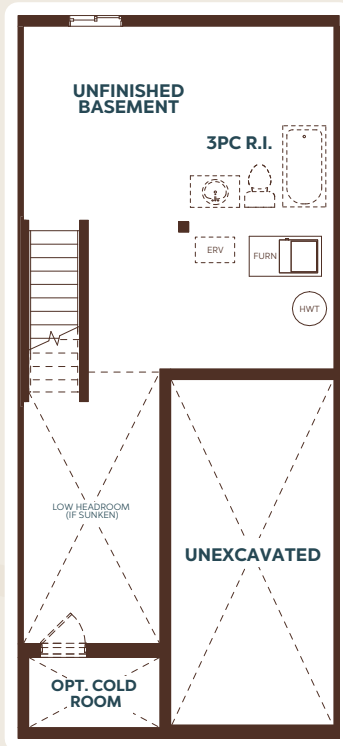
1375 sq.ft. | 3 Bedroom | 2.5 Bathroom

ELEVATION A GROUND FLOOR

MAIN FLOOR

UPPER FLOOR

SITE PLAN



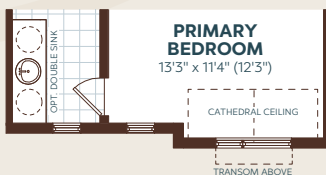
BUILDINGS A, B, C



BUILDING D



UPPER FLOOR VARIATIONS



ELEVATION C
PRIMARY BEDROOM VARIATION

E.&O.E. All materials, specifications and floorplans are subject to change without notice. All house renderings are artist's concept. All floorplans are approximate dimensions. Actual usable floor space may vary from stated floor area. © Fusion Homes 2025. Reproduction of this plan is strictly prohibited.