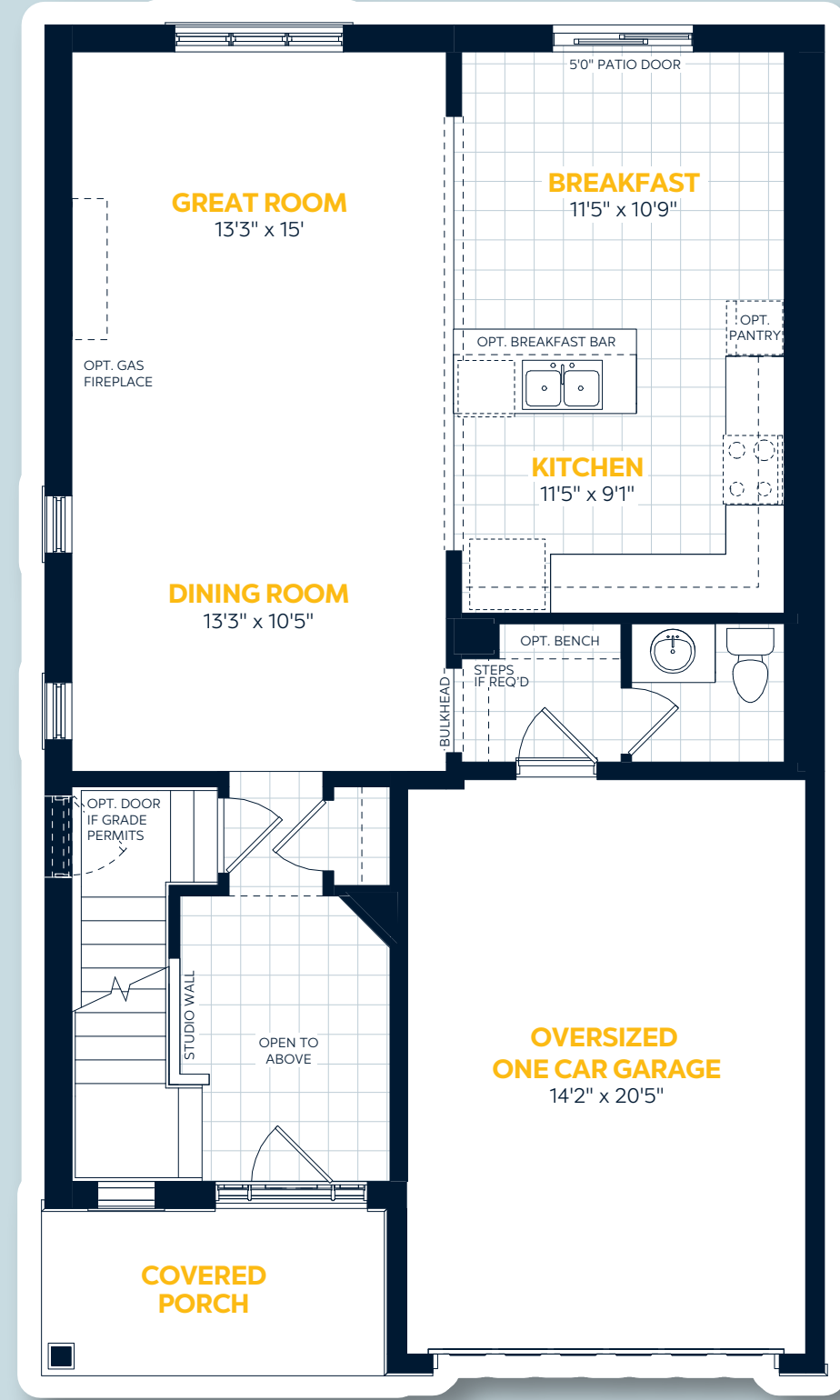


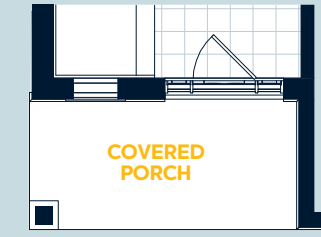
Main & Upper Floors

Elevation A



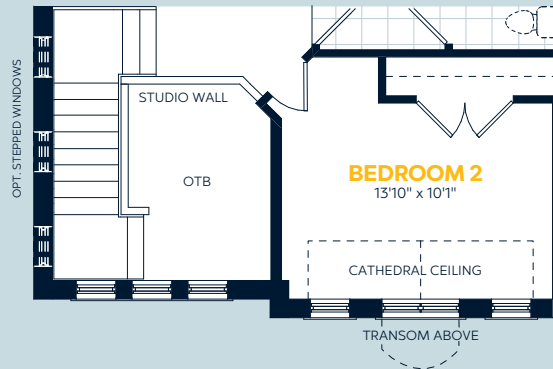
Elevation Variations

Main Floor Variation



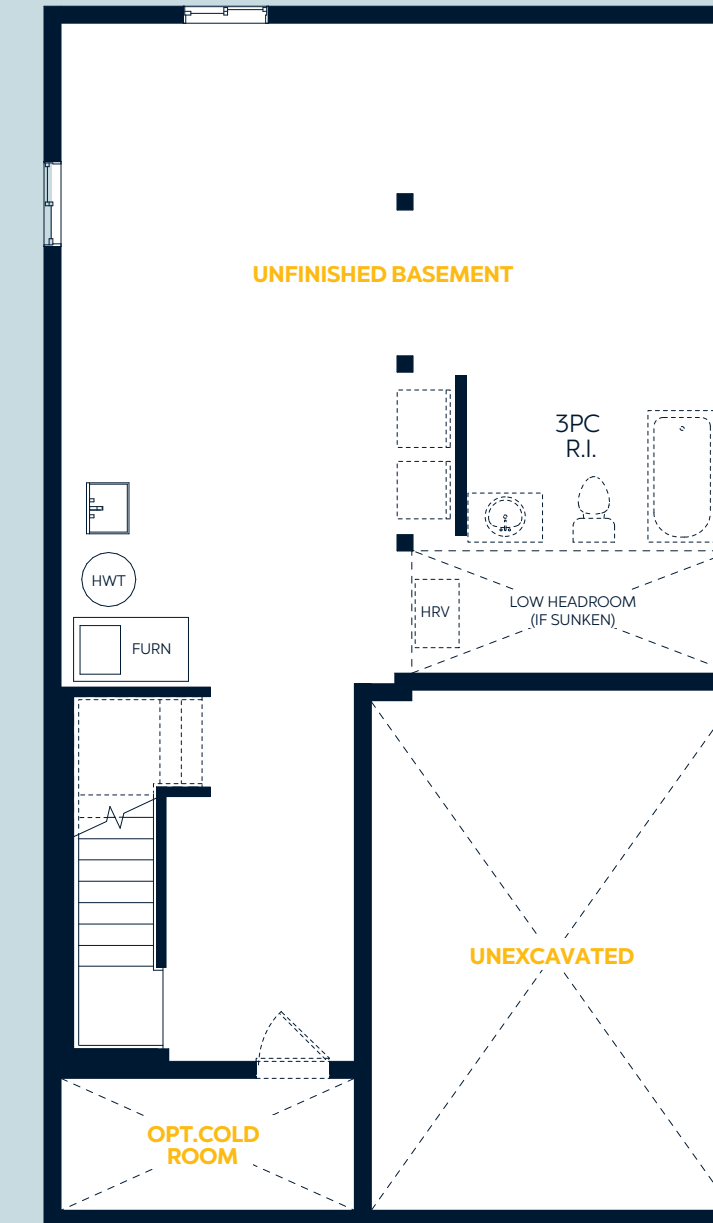
Elevation B
Porch Column Variation

Upper Floor Variation



Elevation B
Bedroom 2 Variation

Basement Floor Plan



The Manchester

4 Bedroom | 2.5 Bathroom | Oversized 1 Car Garage

1,925 sq.ft.

36'

Key Features

- Four Spacious Bedrooms
- Open-Concept Main Floor with Great Room Open to Kitchen
- Convenient Mud Room with Optional Built-In Seating
- Bright Open-to-Above Foyer
- Two Eating Areas

E.&O.E. All materials, specifications and floorplans are subject to change without notice. All house renderings are artist's concept. All floorplans are approximate dimensions. Actual usable floor space may vary from stated floor area. Some designs may require upgraded lots. © Fusion Homes 2021. Reproduction of this plan is strictly prohibited.