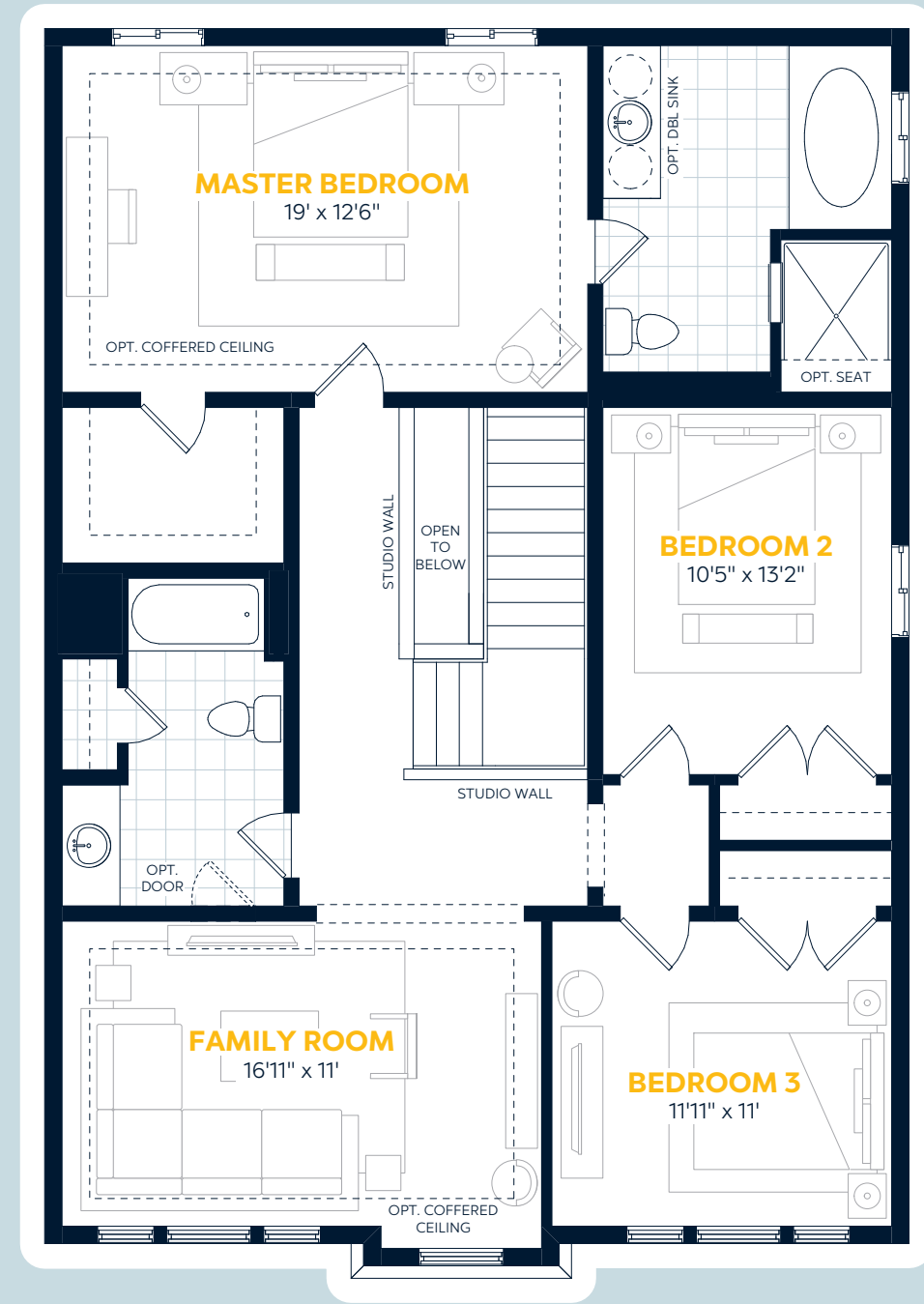
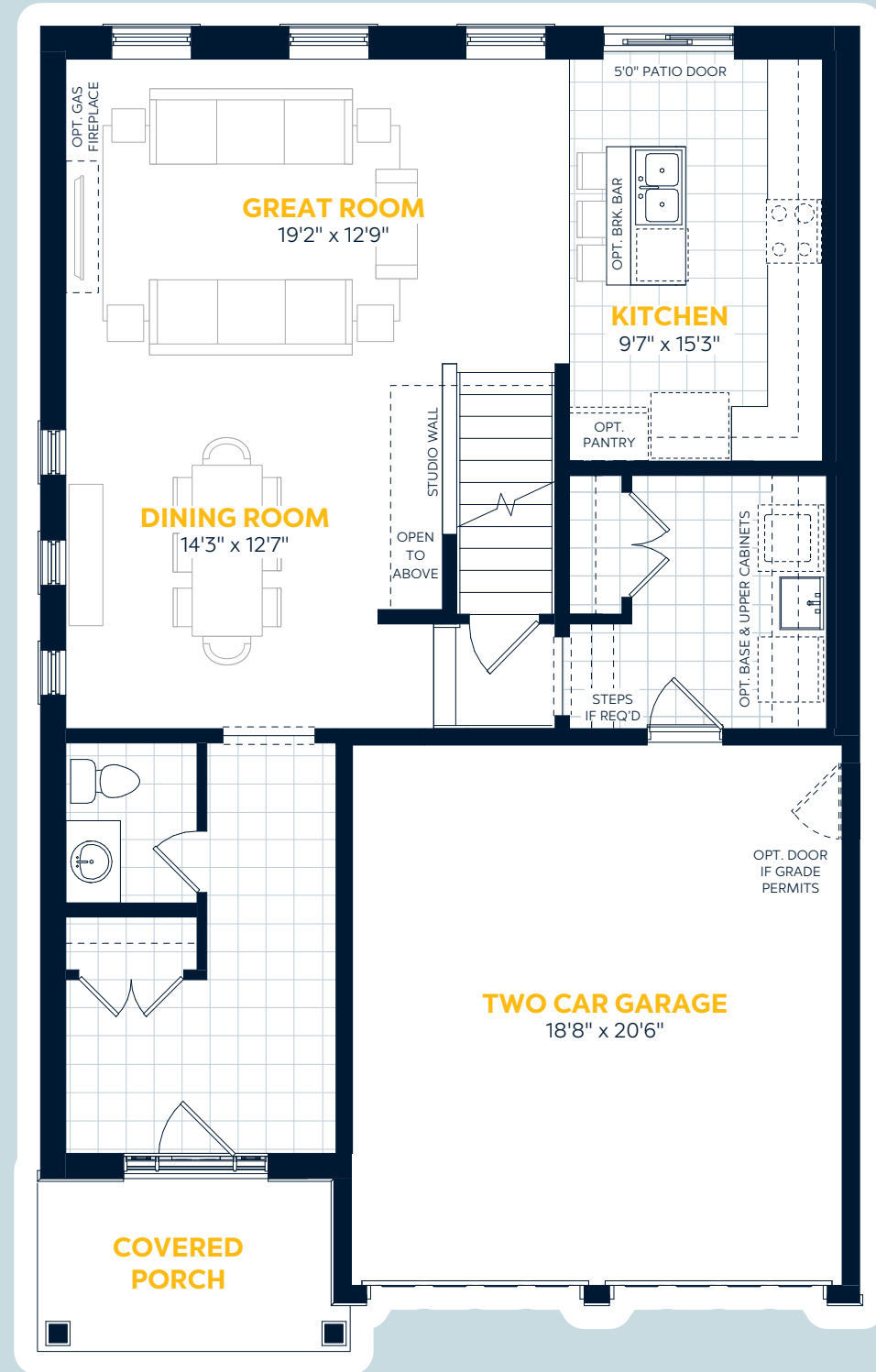


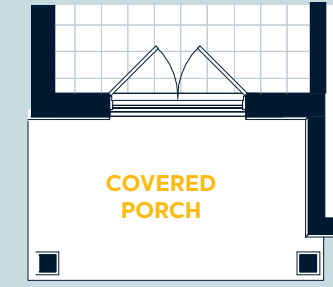
Main & Upper Floors

Elevation A



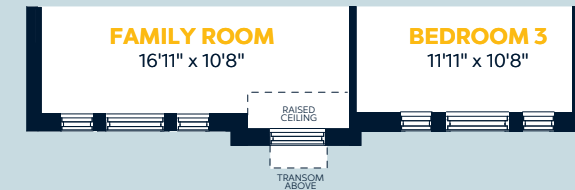
Elevation Variations

Main Floor Variation

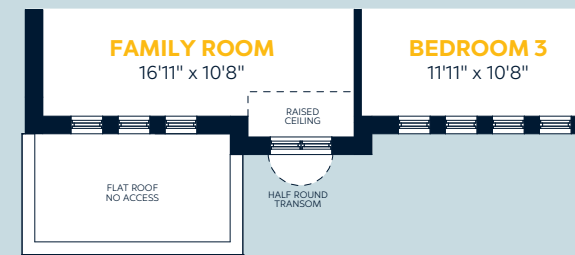


Elevation D
Front Door Variation

Upper Floor Variations

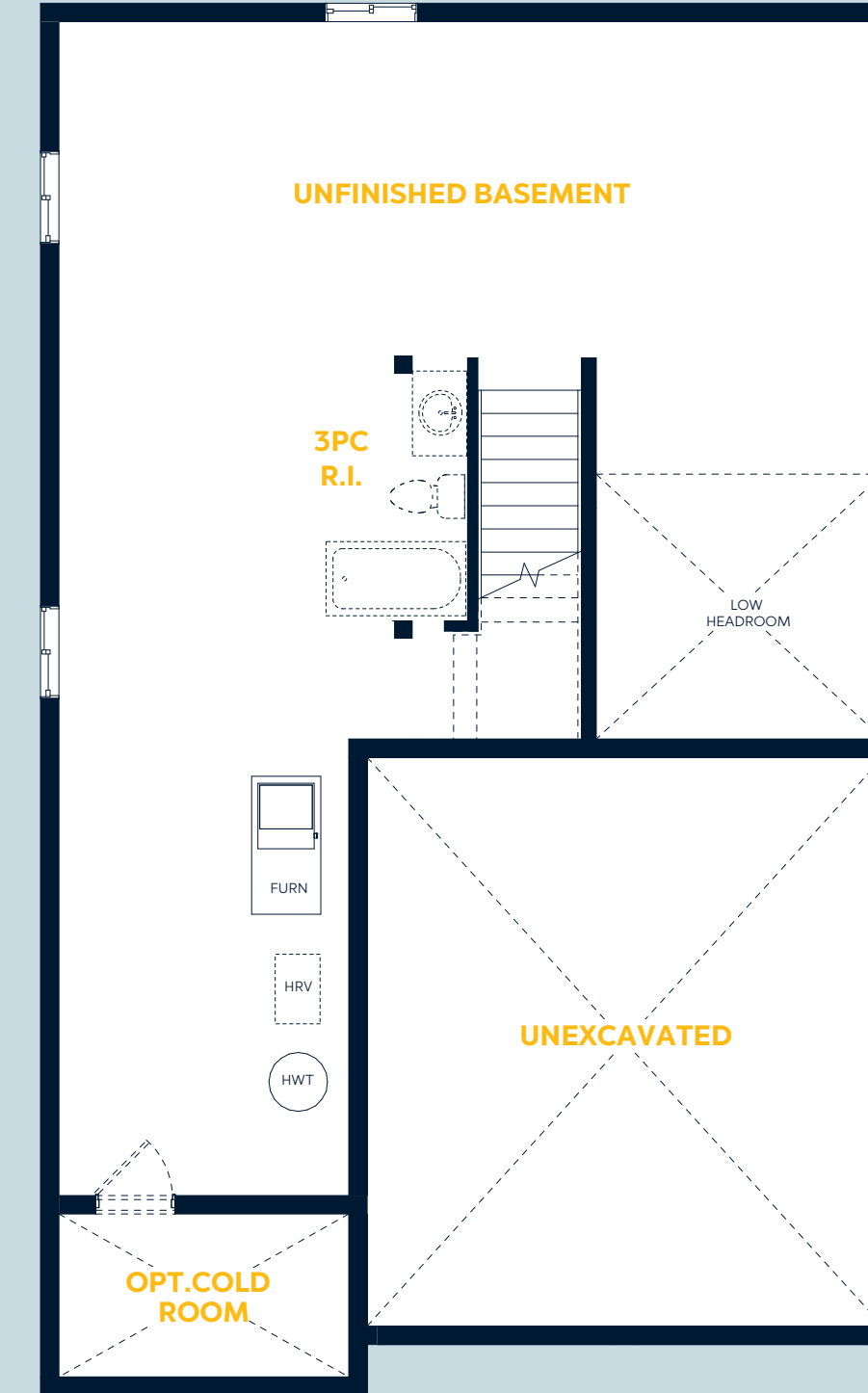


Elevation B
Family Room /
Bedroom 3 Variation



Elevation D
Family Room /
Bedroom 3 Variation

Basement Floor Plan



The Rahi

3 Bedroom | 2.5 Bathroom | 2 Car Garage

2,350 sq.ft.

40'

Key Features

- Designer Options Available to Customize Floorplan
- Spacious Foyer with Closet
- Main Floor Laundry with Large Closet
- Large Open Concept Dining and Great Room
- Upper Floor Family Room

E.&O.E. All materials, specifications and floorplans are subject to change without notice. All house renderings are artist's concept. All floorplans are approximate dimensions. Actual usable floor space may vary from stated floor area. Some designs may require upgraded lots. Furniture is for visualization purposes only and is based on popular furniture sizing. Individual furniture choices could fit differently. © Fusion Homes 2019. Reproduction of this plan is strictly prohibited.