

# The Oxford IV

1,925 sq.ft.

3 Bedroom | 2.5 Bathroom | Oversized 1 Car Garage

Pinnacle Series

36'

Open-Concept Main Floor with Great Room Open to Kitchen  
 Large Chef's Kitchen with an Abundance of Cabinetry  
 Bright Open-to-Above Foyer  
 Convenient Upper Floor Laundry

## Elevations

Oxford IV A

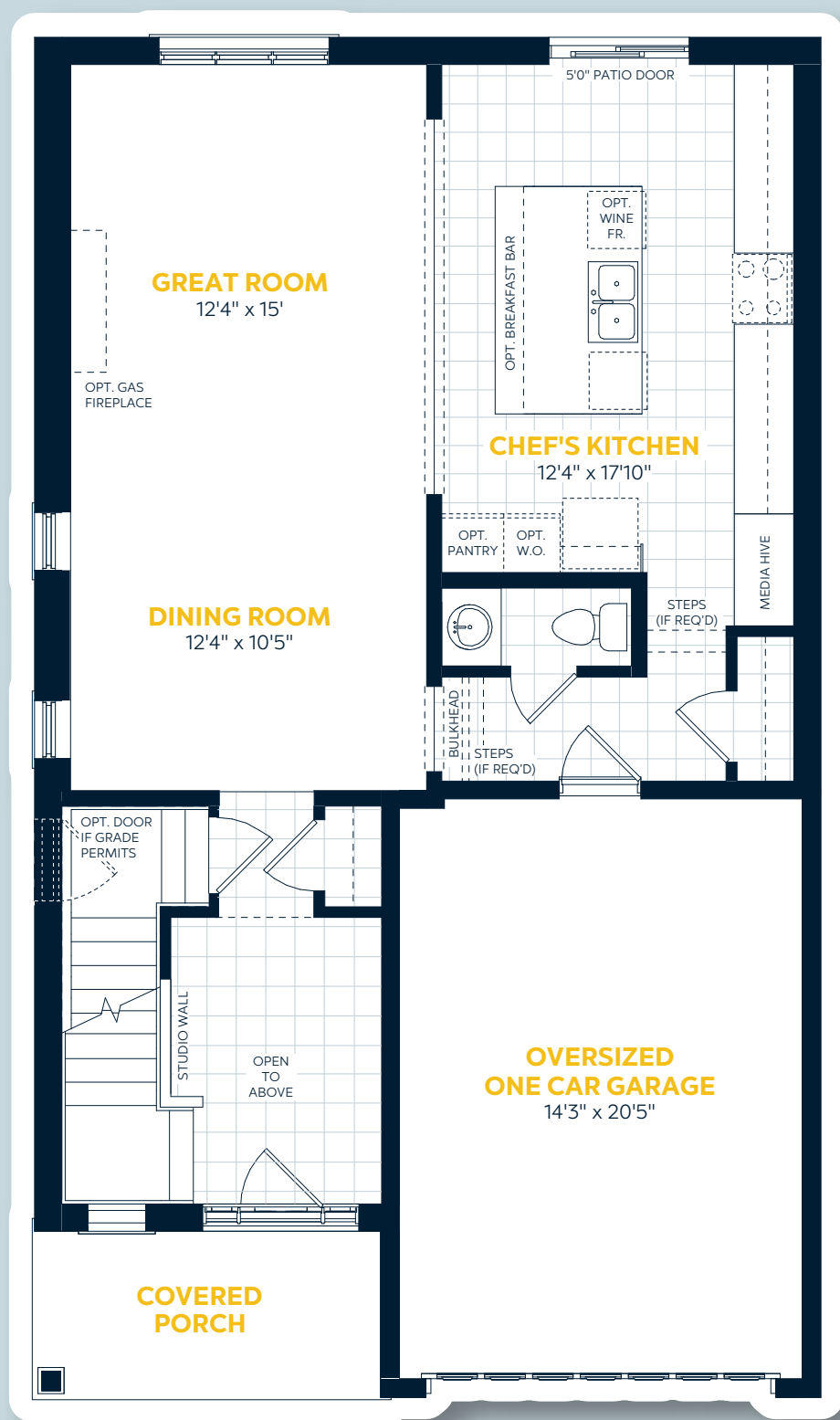


Oxford IV B



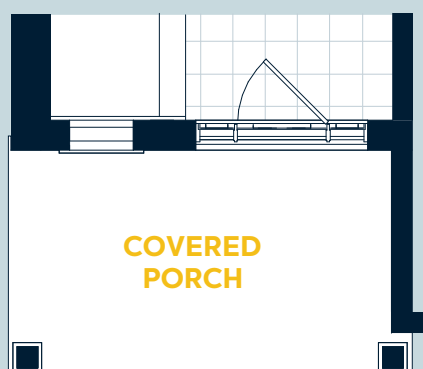
## Main Floor

Elevation A



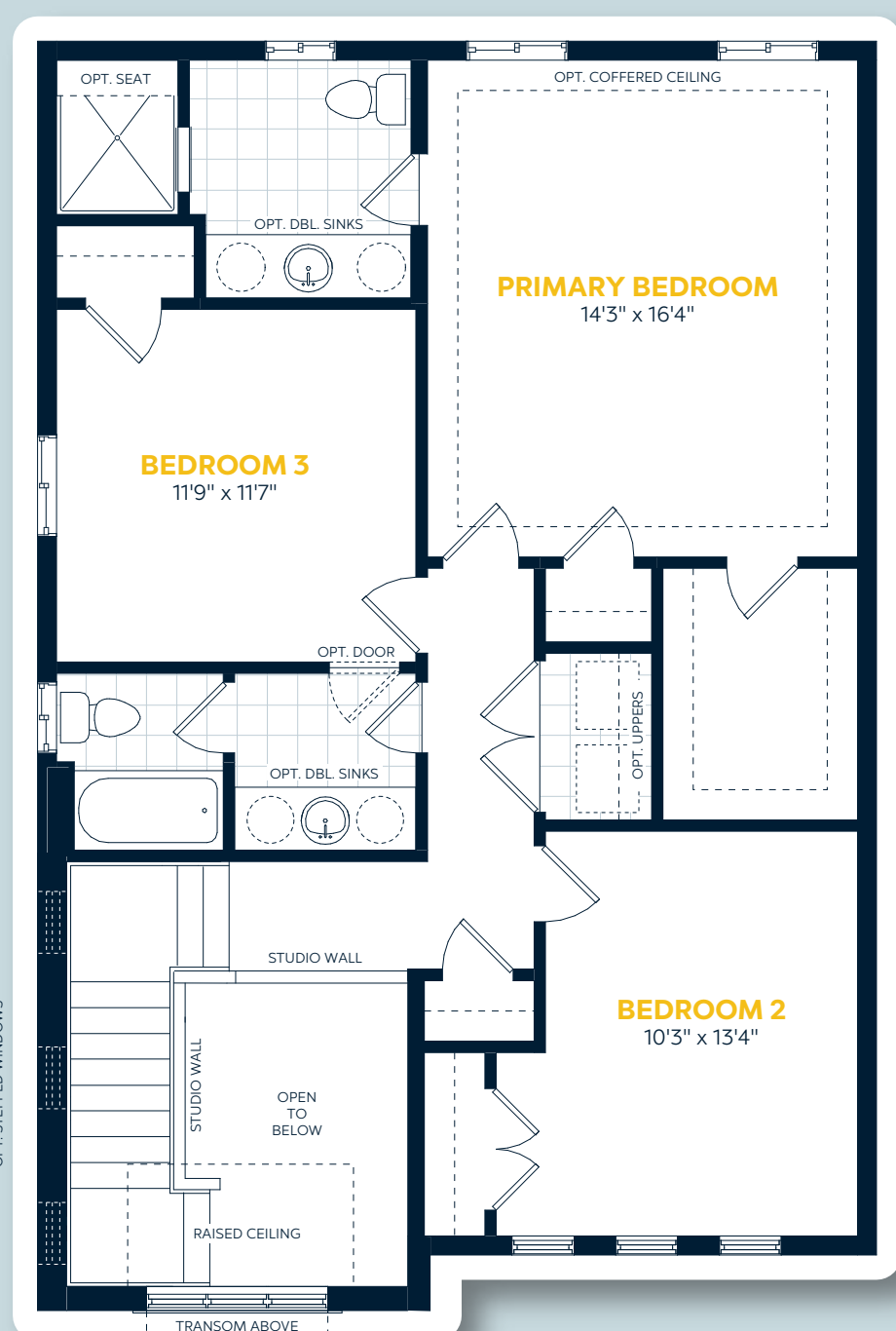
## Elevation Variations

Elevation B  
 Covered Porch Variation



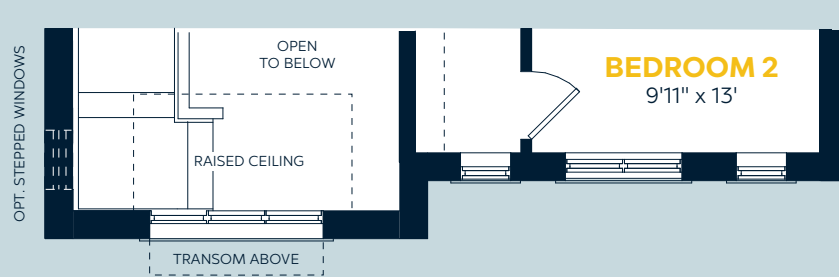
## Upper Floor

Elevation A



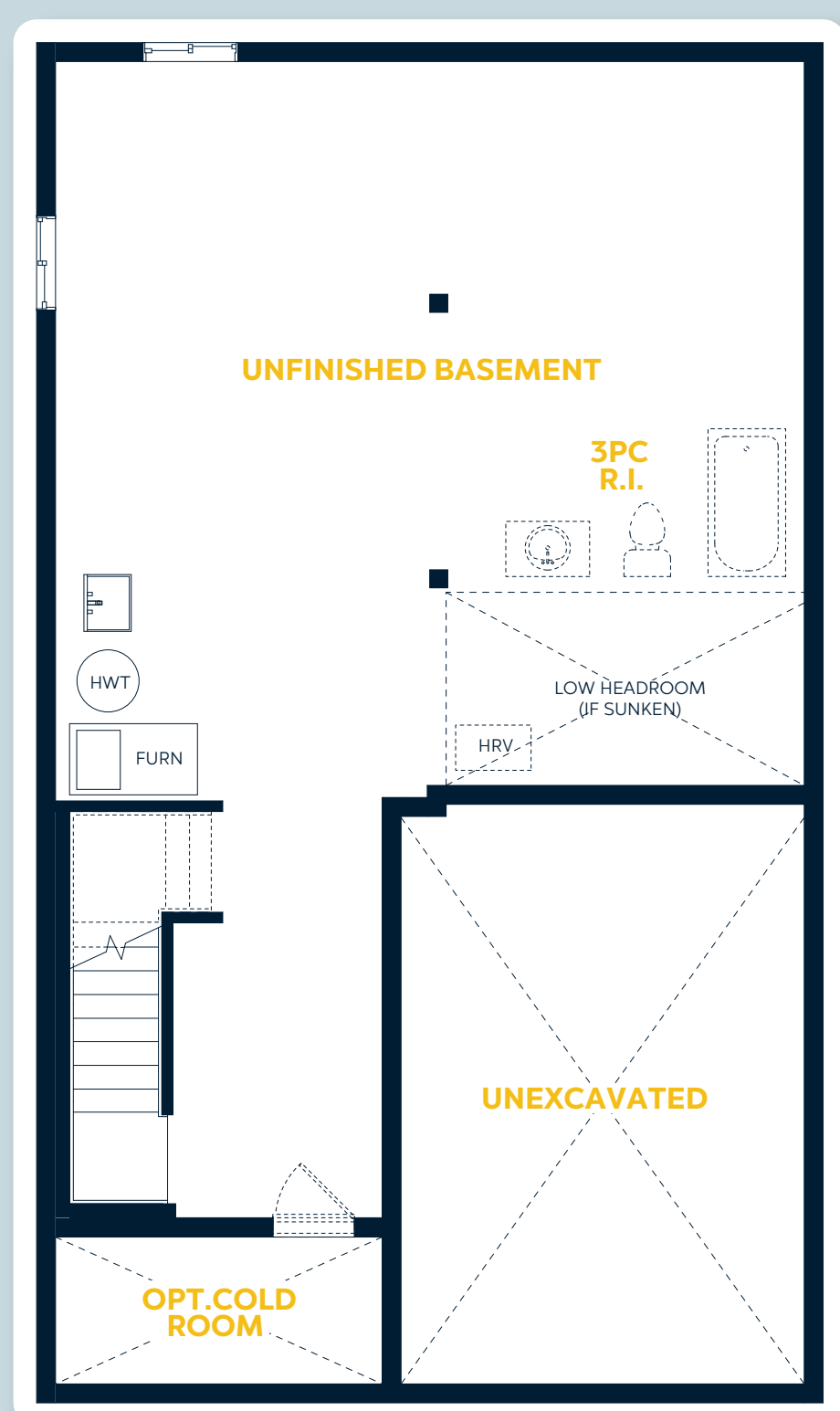
## Elevation Variations

Elevation B  
 Bedroom 2 Variation



## Basement Floor

Elevation A



## Elevation Variations

Elevation B  
 Opt. Cold Room Variation

